



NJPH

The Journal of the
NEW JERSEY POSTAL HISTORY SOCIETY
 ISSN: 1078-1625

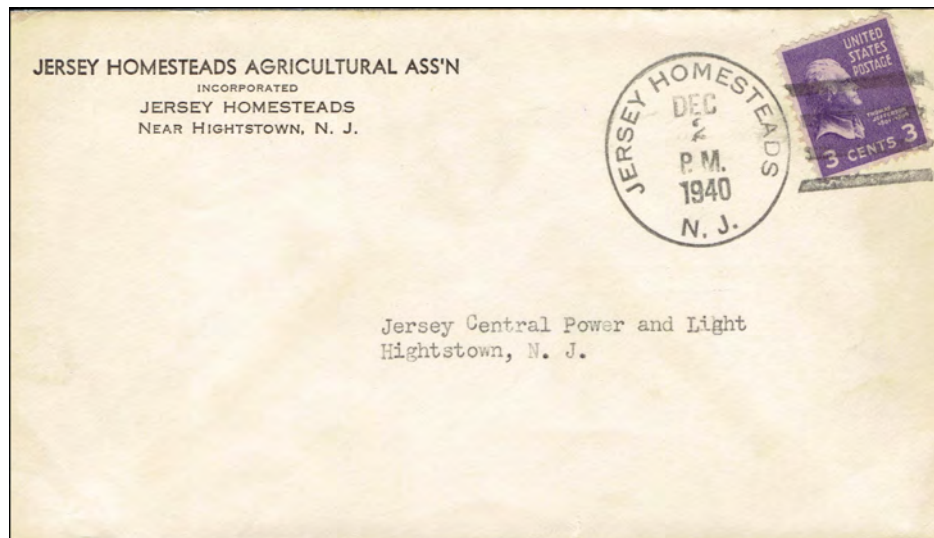
Vol. 47

No. 3

Whole Number 215

August 2019

A Self-Contained New Deal Community is created in Monmouth County



Jersey Central Power and Light
 Hightstown, N. J.

The postal history of Jersey Homesteads, created in the New Deal era, complete with homes, a school, a factory, and a post office. See [page 133](#) for further information.

~ CONTENTS ~

President's Message	Robert G. Rose	130
NOJEX-ASDA Show / Garden State Postcard Show & POCAV Postcard Show		131
Jersey Homesteads: A New Deal Community's Postal History	Robert G. Rose	133
Naval Air Station Lakehurst, Part III: German Zeppelins which Called at Lakehurst	Capt. Lawrence B. Brennan, US Navy Ret.	137
On the Auction Scene: NJ First Day and Earliest Reported Date Covers	Robert G. Rose	157
West End, New Jersey Cancellations	Roger D. Curran	163
The Sword of Damocles and the Morris Canal	Donald A. Chafetz	168
A Few Lesser Known Stamp Dealers of NJ, Part 3	John Lupia	179
Member News: NJPHS Members at Stockholmia		183
Hometown Post Offices: The Snufftown-Stockholm Conundrum	Jean R. Walton	184
Member Ads		189
Literature Available		191

NEW JERSEY POSTAL HISTORY SOCIETY, INC.

APS Affiliate #95 - PHS Affiliate #1A - NJFSC Chapter #44S ISSN: 1078-1625
Annual Membership Subscriptions \$15.00 *** Website: www.NJPostalHistory.org/

OFFICERS

President: Robert G. Rose, 18 Balbrook Drive, Mendham, NJ 07945 President@NJPostalHistory.org
VP & Ed. Emeritus: E. E. Fricks, 25 Murray Way, Blackwood, NJ 08012 VicePresident@NJPostalHistory.org
Treasurer: Andrew Kupersmit, 143 Woodbridge Ave., Metuchen, NJ 08840 Treasurer@NJPostalHistory.org
Secretary: Jean R. Walton, 125 Turtleback Rd., Califon, NJ 07830 Secretary@NJPostalHistory.org
Webmaster: Warren Plank, 625 Singley Ave, Runnemede, NJ 08078 webmaster@NJPostalHistory.org
Co-Editors /NJP: Jean R. Walton, NJPostalHistory@aol.com & Robert G. Rose, robertrose25@comcast.net

PRESIDENT’S MESSAGE



Our Journal was entered in the literature competition at the APS StampShow 2019 held in Omaha in early August. The four issues comprising the 2018 volume were awarded a large gold medal and the reserve grand award. Quite an accomplishment for which our membership should be very proud. This award belongs to all of our contributors ~ it is your award! ~ and to the talent and hard work of our editor, Jean Walton. On behalf of our membership, I thank each of you, and especially you, Jean!

In this issue, our regular contributors have provided a number of articles covering a wide range of postal history. Roger Curran details the cancels from the West End, N.J. post office. I write of the short-lived postal history of the New Deal community known as Jersey Homesteads. Captain Larry Brennan continues his series concerning the great airships at Lakehurst, this article detailing its use by German zeppelins. Don Chafetz has authored an article with an intriguing title: “Sword of Damocles and the Morris Canal.” John Lupia returns to these pages with a short piece on three lesser known New Jersey stamp dealers, ending his series on this topic. I write another in the “On the Auction Scene” series, this one concerning the sale of classic first day covers postmarked from New Jersey. Jean Walton contributes another article in the long-running series of “Hometown Post Offices,” this one detailing the geographical confusion over the shifting location of the Stockholm post office, and its relationship with the community of Snufftown. Speaking of another Stockholm, this one in Sweden, several of our members exhibited in Stockholmia 2019, an international show sponsored by the Royal Philatelic Society London. As reported in Membership News, each of our member exhibits was awarded a large gold medal.

Finally, collectors will have an opportunity to peruse hundreds of thousands of postcards in search of postal history at the Garden State Postcard Club’s annual show in Parsippany in September. Looking to the fall, our Society will hold its annual meeting at the NOJEX ASDA Stamp Expo at the Hilton Meadowlands Hotel in East Rutherford, NJ on Sunday, November 17. Be sure to put it on your calendar! There is still time to enter an exhibit in the show. A prospectus and show information can be found at www.nojex.org. If you can’t make it to that show, consider the POCAX post card show the same weekend in Mt. Laurel, NJ.

Enjoy the rest of the summer!

ROBERT G. ROSE

COME TO THE ANNUAL NJPHS MEETING AT NOON Sunday Nov 17



**NOJEX ASDA Stamp Show
November 15-17, 2019**

Hilton Meadowlands Hotel
2 Meadowlands Plaza East
Rutherford, NJ 07073

**THE ONLY APS WORLD SERIES OF PHILATELY
SHOW IN THE TRI-STATE REGION
FREE PARKING FREE ADMISSION**

Tel. 866-295-8986 for special
\$149 NOJEX room rate.



**50 DEALERS, 150+ FRAMES OF EXHIBITS, Public Programs & Meetings
United States and United Nations Post Offices**

Convening Societies: Canal Zone Study Group, New Jersey Postal History Society

Dealer Bourse: Dana Guyer, dana@americanstampdealer.com 800-369-8207
Show Information: Robert G. Rose, robertrose25@comcast.net 908-305-9022

Show Information, Prospectus and Exhibit Application: www.nojex.org



**Meadowlands
Hilton Hotel**

2 Meadowlands Plaza
East Rutherford,
New Jersey 07073

Located off Route 3 East and the
NJ Turnpike



Special NOJEX ASDA Hotel
Rate of \$149
with free wi-fi.

Admission: Free
Parking: Free

Fri. & Sat. -
10:00 am - 6:00 pm
Sunday -
10:00 am - 3:00 pm

Awards Banquet
Saturday -
Cash Bar - 6:30 pm
Dinner - 7:00 pm

For Banquet information
please download the
[Banquet Form](#)

For More Information

[Click here for the
ASDA Website](#)

Robert G. Rose, NOJEX Chair
robertrose25@comcast.net
908-305-9022

Dealer Bourse

Dana Guyer, ASDA Executive
Director
Dana@AmericanStampDealer.com
800-369-8207

Exhibits

Glenn Spies
GlennSpies02@gmail.com
201-602-0371

Download the
[NOJEX Prospectus and
Entry Form](#)

Publicity and Awards
Nick Lombardi
8805@comcast.net

\$4/2 Days (\$1 off with card)
\$3/1 Day (\$1 off with card)
35-40 Dealers

For Info: (908) 418-3326

60th Annual Show

GARDEN STATE POSTCARD CLUB

DOOR PRIZES • EXHIBITS • FREE PARKING

PAL Center, 33 Baldwin Rd.
Exit off Rte. 46 at Baldwin Rd.
Parsippany, N.J. 07054

Sept. 21 & 22, 2019 • Sat. 10-6 Sun. 10-4



South Jersey Postcard Club

POCAX 2019

Saturday, November 16, 2019
9 AM to 3:30 PM

3rd year at our new location:
Aloft Hotel
558 Fellowship Rd., Mt. Laurel, NJ
Corner of Route 73
Near I-295 & the NJ Tpk Exit 4

COME ALONG TO POCAX-NOV 16, 2019

FREE ADMISSION
Free Parking | Nostalgic Displays
Refreshments Available
For details call (609) 261-1472

JERSEY HOMESTEADS: A New Deal Community's Postal History

By Robert G. Rose



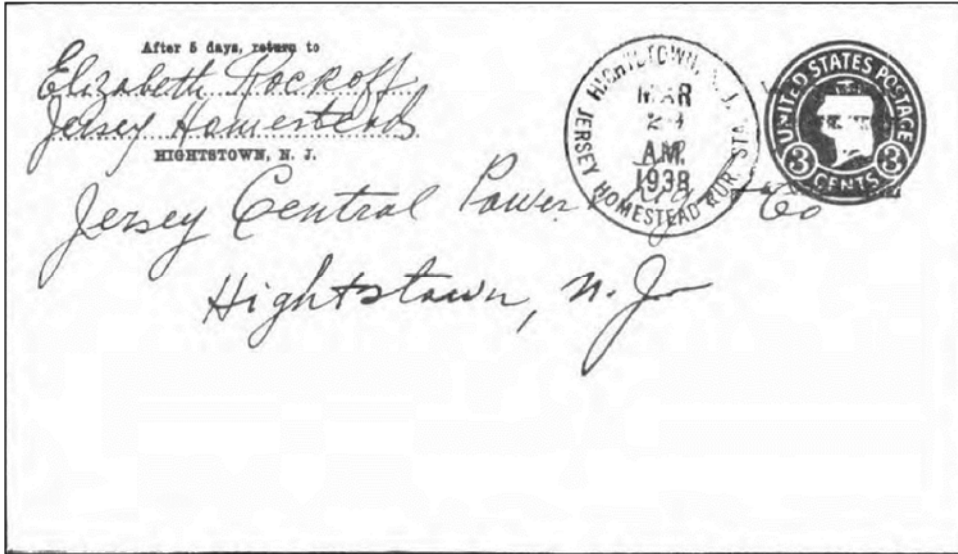
During the depths of the Great Depression of the 1930's, a planned community known as Jersey Homesteads was established in what was then a largely rural area in Monmouth County, New Jersey with the financial support of the federal government. Jersey Homesteads was one of 99 New Deal communities established during the depression. The federal government carried out this experiment in community and economic planning to help relieve widespread unemployment through the relocation of urban workers to rural areas. The creation of Jersey Homesteads was an attempt to demonstrate the economic feasibility of combining industry with part time agriculture in a planned community through the establishment of a cooperative garment factory and an agricultural association.¹ Jersey Homesteads was the largest of all the planned communities of that era, and included the construction of over 200 houses, a factory, a community center and school as well as a small retail center. The 1940 census counted a population of 698 residents.



Illustration courtesy Library of Congress

Fig. 1: Aerial view of Jersey Homesteads c. 1937-38.

A post office was established in Jersey Homesteads as a rural branch of the nearby Hightstown post office on October 1, 1936 and operated as such until October 15, 1940.² A cover with the rural branch station postmark is illustrated below in *Figure 2*.



Homestead Rural Station and Highbridge, NJPH, Vol. XII, March 1984, Whole No. 57

Fig. 2: Hightstown, N.J. Jersey Homestead Rur. Sta. March 29, 1938 handstamp postmark and four bar duplex cancel to Hightstown on a 3¢ postal stationery envelope.

However, Jersey Homesteads' life as a planned community was short lived. In April, 1939 the federal government declared the garment factory a failure and auctioned off its fixtures. In 1940, the agricultural cooperative association ceased operations. On October 16, 1940, notwithstanding these business failures, Jersey Homesteads opened its own post office. Illustrated below in *Figure 3* is a cover postmarked Jersey Homesteads on December 2, 1940 with a return card of the ill-fated Jersey Homesteads Agricultural Association, addressed to the Jersey Central Power & Light Company, perhaps paying its final electric bill.

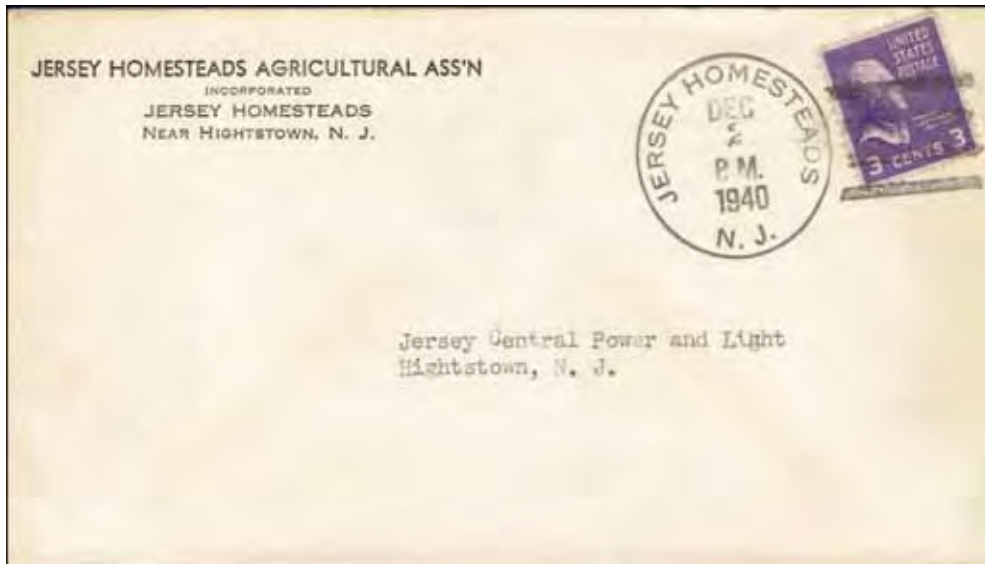


Fig. 3: Jersey Homesteads December 2, 1940 handstamp postmark and four bar duplex cancel with 3¢ Presidential Issue to Hightstown.

Beginning in 1943, discussions began with the federal government to terminate the project and end the subsidies it was provided. Illustrated below in *Figure 4* is a postcard with a handstamped postmark dated November 6, 1944. On November 6, 1945, following the death of President Franklin Roosevelt, Jersey Homesteads was renamed Roosevelt. However, the post office continued as Jersey Homesteads until April 16, 1946 when it was formally established as the Roosevelt post office.³



Fig. 4: Jersey Homesteads November 6, 1944 handstamp postmark and four bar duplex cancel with 1¢ Famous American Issue to Long Branch.

The community still lives today as Roosevelt Borough. In November 1983, the Jersey Homesteads Historic District in Roosevelt Borough was added to the New Jersey Register of Historic Places.



Photo from the National Registry of Historic Places⁴

Fig. 5: Roosevelt post office, zip code 08555, in Monmouth County. It reflects the Bauhaus style of architecture which was used when Jersey Homesteads was built.

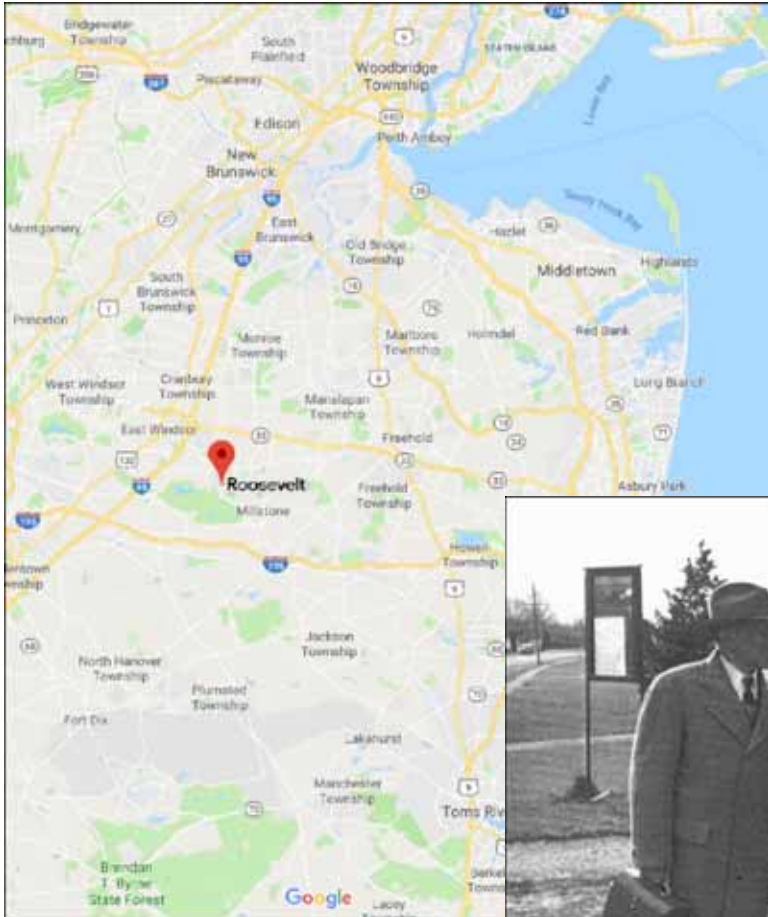


Fig. 6: Google map showing location of Roosevelt, NJ, once known as Jersey Homesteads.



Borough of Roosevelt Historical Collection, Special Collections Rutgers University Libraries
Fig. 7: The artist Ben Shahn (center), whose mural graces the local school, in front of the post office, c.1965.

ENDNOTES:

- ¹ The community was organized by Jewish leaders and was populated with many garment workers from New York City attracted by the prospect of steady work in the community's cooperative garment factory and farming association as well as the ability to move into newly constructed subsidized community owned homes. A detailed chronological history of the community is found at the following Rutgers University Libraries website: <http://www2.scc.rutgers.edu/ead/manuscripts/roosevelthistoricalcollectionf.html> (retrieved August 8, 2019).
- ² John L. Kay & Chester M. Smith, Jr., *New Jersey Postal History* (Quarterman Publications, Inc., Lawrence, Mass. 1977) p. 92. This cover was originally illustrated in an *NJPH* article in which the author was not able to establish the date in *Kay & Smith* on which Jersey Homesteads began operating as a rural station of the Hightstown post office. Brandes S. Smith, *Homestead Rural Station and Highbridge, NJPH*, Vol. XII, March 1984, [Whole No. 57](#), p. 23. In a subsequent issue of *NJPH*, an unnamed author identified the page in *Kay & Smith* which listed its starting date as October 1, 1936. Anon., "Homestead Station – A Response," *NJPH*, Vol. XIII, September 1985, [Whole No. 64](#), p. 52.
- ³ Kay & Smith, *op. cit.*, p. 95.
- ⁴ National Register of Historic Places in the USA, By Apc106 - Own work, CC BY-SA 3.0, <https://commons.wikimedia.org/w/index.php?curid=21849140>

NJPHS LITERATURE AVAILABLE POSTPAID from Robert G. Rose, NJPHS, 18 Balbrook Drive, Mendham, NJ 07945 or email Secretary@NJPostalHistory.org for a Paypal invoice.	Member price	Non-members
CD or hard copy: <i>The Postal Markings Of New Jersey Stampless Covers: An Update</i> by Donald A. Chafetz (2004) hardcopy, 28pp. or available on CD in.PDF format Updates the extensive work of William C. Coles, with new markings and dates since that original work was published in 1983 Also available to members free as a downloadable file	\$10.00 FREE	\$15.00
CD only: <i>Washington Organ Manufacturers</i> on CD, by Len Frank - 3 articles + many organ advertising cover illustrations not in <i>NJPH</i> , in Acrobat Reader [.PDF] format <ul style="list-style-type: none"> • A series of 3 articles on the advertising covers and history of the organ manufacturers of Washington, NJ, • Adds a picture gallery of many covers not illustrated in those articles. • Includes much paper ephemera as well. An impressive collection. 	\$7.50	\$10.00
Hard copy: <i>Illustrated Directory of New Jersey 1847 Issue Covers</i> , Brad Arch, ed., 1987, 44pp & Supplements <ul style="list-style-type: none"> • For the collector of the 1847 Issue, this book by Brad Arch is the comprehensive work on New Jersey covers • 5¢ and 10¢ covers in separate sections • Detailed descriptions of each cover, arranged by office of origin. 	\$4.00	\$7.50
Hard copy: <i>New Jersey DPO's</i> , Brad Arch, ed., 1981, 22pp, pocket sized Checklist of Discontinued Post Offices THE pocket manual of New Jersey discontinued post offices, easy to transport and an excellent checklist Also available to members free as a downloadable file	\$3.00 FREE	\$4.00
Hard copy: <i>New Jersey's Foreign Mail</i> , 1997, Gerard J. Neufeld, 76pp. <ul style="list-style-type: none"> • A fine monograph on foreign mail to and from New Jersey in the 19th Cent. • Profusely illustrated • Each cover explained 	\$8.00	\$10.00
CD: Mosher's NJ Private Express Companies <ul style="list-style-type: none"> • 10 compiled articles by Bruce Mosher on many aspects of private express mail in New Jersey with many color illustrations • Previously unpublished material in lengthy postscript plus index 	\$10.00	\$15.00
CDs: Back issues of the NJPH Journal are available on CD for 2003 to 2018, at <ul style="list-style-type: none"> • Each CD includes the 4 quarterly journals for one year, in color, pdf format CD: 2018 <i>NJPH</i> Issues on CD in PDF format, many color illustrations.....	\$5.00 each \$5.00	\$7.50 each \$12.00
Members only: 2 back issue CDs, \$8.00, 3 back issue CDs \$12.00, 4 back issue CDs \$15.00, 5 CDs \$18, 6 CDs \$22, 7 CDs \$25, 8 CDs \$28, 9 CDs \$30, 10 CDs \$35, all 12 CDs (including 2018) \$48. (Also available to members free as downloadable files.) Non-members: 2 back issue CDs, \$12.00, 3 back issue CDs \$15.00, 4 back issue CDs \$18.00, 5 back issue CDs \$22, 6 back issue CDs \$28, 7 back issue CDs \$32, 8 back issue CDs \$35, 9 back issue CDs, \$38, all 15 back issue CDs (including 2017 CD), \$58.		
Literature purchases may be made with Paypal – email your choices to Secretary@NJPostalHistory.org for a Paypal invoice.		

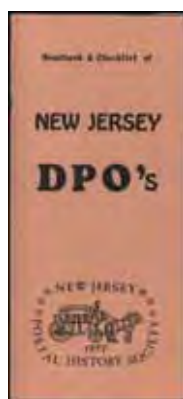
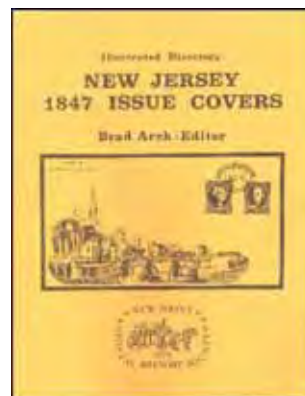
DOWNLOADABLE FILES AVAILABLE FREE TO MEMBERS ONLY!*

Brad Arch's handy DPO book available in Excel format (for hardcopy see above).	FREE	2.95
Stampless Era Post Offices, based on Coles and the Coles Update in Excel format.	FREE	2.95
Brennan, Lawrence, <i>New Jersey-Built Air Craft Carriers</i> , a long series with many covers in PDF format.	FREE	12.95
Chafetz, Don <i>Coles Update</i> – a supplement and update to Wm Coles study of <i>New Jersey Stampless Markings</i> , in pdf format.	FREE	2.95
Chafetz, Don, <i>Development of Morris County Mail Service – 1760-1850</i> – a digital exhibit, PDF.	FREE	4.99
Edge, Jack, <i>Post Towns of Burlington County</i> . All of Jack's Burlington series, as published in the pages of <i>NJPH</i> , compiled into one document, in PDF format.	FREE	7.99
Edge, Jack, <i>Postmasters of Burlington County</i> . List of Burlington County postmasters from in Jack's Burlington series, in PDF format.	FREE	4.99
Englund, Arne, <i>New Jersey Summer Post Offices</i> – seasonal POs of NJ, in PDF.	FREE	
Law, Mary E., <i>The Postal History of Cape May County, NJ</i> including postmaster list, published in <i>NJPH</i> between March 1993 through May 1994, PDF format.	FREE	8.99
Peck, Len, <i>Essays on Sussex County & New Jersey Postal History</i> , articles 2004-10, pdf	FREE	9.95
Roth, Steve – NJ Stampless Markings Database – an ongoing study of known NJ SFLs	FREE	
Siskin, Ed & Jean – A List of NJ Legislative "Free:" Franks -2012	FREE	4.99
Walker, Jim, <i>Hunterdon County Postal History</i> , serialized articles 2007-2010, pdf	FREE	

* see our web site at www.NJPostalHistory.org for other files available free to the public in our Free Online Library ~ Includes information of early postal legislation, Revolutionary and Civil War covers, and postmaster lists from the stampless era (1789-57), and for various NJ counties which have been researched, of interest to postal historians and genealogists as well.

THE NEW JERSEY POSTAL HISTORY SOCIETY LITERATURE

**AVAILABLE FOR IMMEDIATE DELIVERY, Postpaid, send check to: Robert G. Rose, New Jersey PHS, Robert G. Rose, 18 Balbrook Drive , Mendham, NJ 07945, or email President@NJPostalHistory.org.
PayPal payment available – email Secretary@NJPostalHistory.org with wants for Paypal invoice.**



**Yearly NJPH issues on CD
 (2003 – 2015)
 Plus other valuable studies
 on CD**



Washington NJ Organ
 Manufacturers
 By Leonard Frank

New Jersey Private
 Express Companies
 By Bruce H. Mosher



Literature purchases may be made by check (see above) or with Paypal – email us your choices to Secretary@NJPostalHistory.org for a Paypal invoice.	Member price	Non-members
CD or hard copy: <i>The Postal Markings Of New Jersey Stampless Covers: An Update</i> by Donald A. Chafetz hardcopy, 28pp. or available as CD in Acrobat Reader [.PDF] format (2004) Updates the extensive work of William C. Coles, with new markings and dates since that original work was published in 1983	\$10.00	\$15.00
CD: Bruce Mosher's <i>NJ Private Express Companies</i> <ul style="list-style-type: none"> • 10 compiled articles by Bruce Mosher on many aspects of private express mail in New Jersey • Many color illustrations • Previously unpublished material in lengthy postscript • Alphabetical index 	\$10.00	\$15.00
CD: <i>Washington NJ Organ Manufacturers</i> on CD, by Len Frank - 3 articles + many illustrations not in <i>NJPH</i> , in Acrobat Reader [.PDF] format, 2004 <ul style="list-style-type: none"> • A series of 3 articles on the advertising covers and history of the organ manufacturers of Washington, NJ, • Adds a picture gallery of many covers not illustrated in those articles. • Includes much paper ephemera as well. An astounding compilation of material. 	\$7.50	\$10.00

Visit our web site at: www.NJPostalHistory.org/
 (see inside back cover for hard copy literature)